

hike out; intermittent trail

hike in; less trail; more backtracking

dayhiker

campsite

left car

FREMONT CO
SUBLETTE CO

TENTH

STANDARD

SHOSHONE
TETON

PARALLEL

NATIONAL
NORTH

WILDERNESS
BOUNDARY

FITZPATRICK
WILDERNESS

FOREST

NATIONAL
FOREST

Union Peak
11491

TETON

NATIONAL
FOREST

313
N.
N.

0
10"

811

12

810

4809

13

4808

25'

4807

4813
T. 41

4812
T. 40

4811

4810

4809

4808

4807

SUBLETTE CO
FREMONT CO

6
Moon Lake

7

12

18

13

19

24

4813
T. 41

4812
T. 40

4811

4810

4809

4808

4807

SUBLETTE CO
FREMONT CO

6
Moon Lake

7

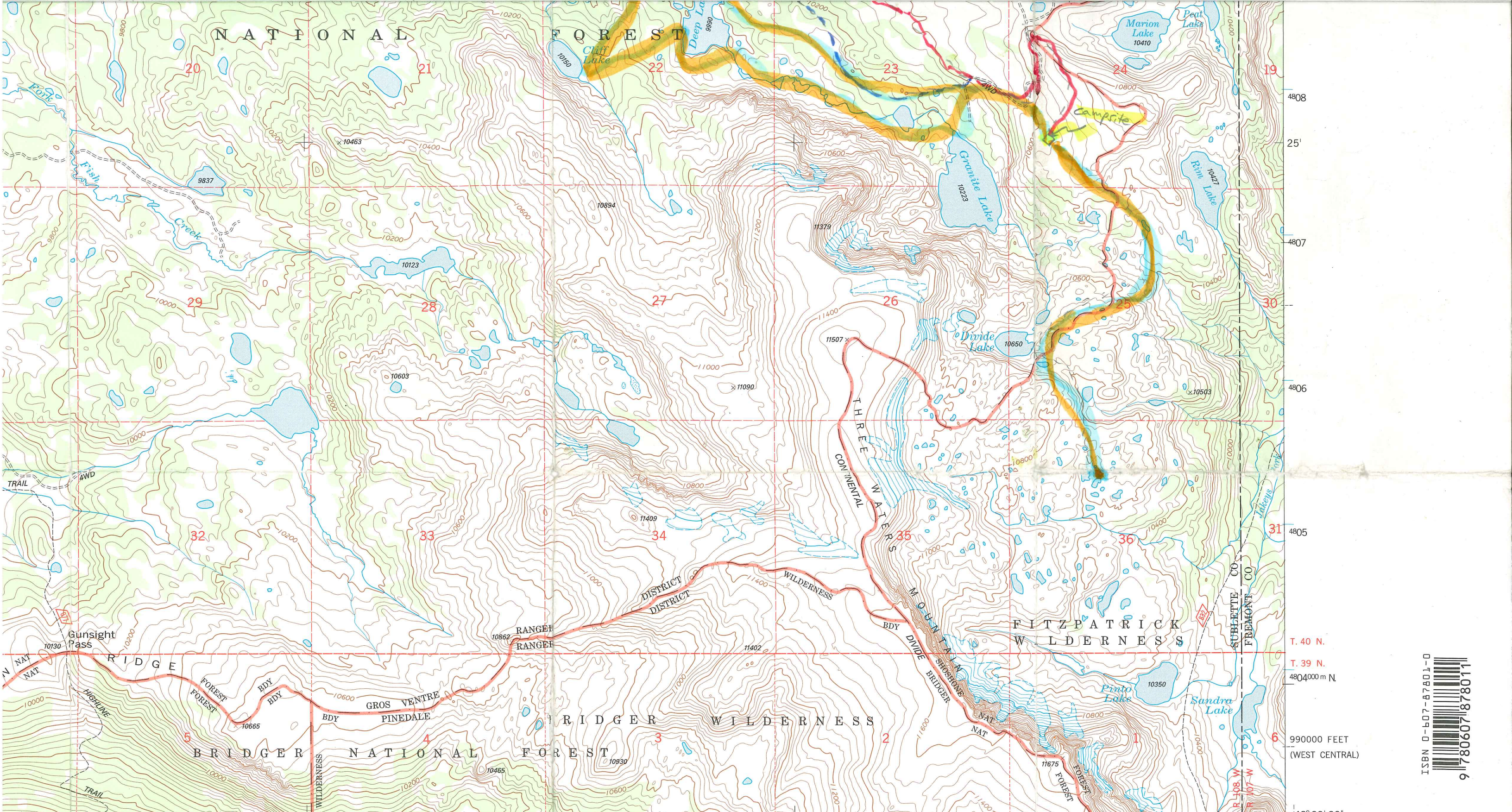
12

18

13

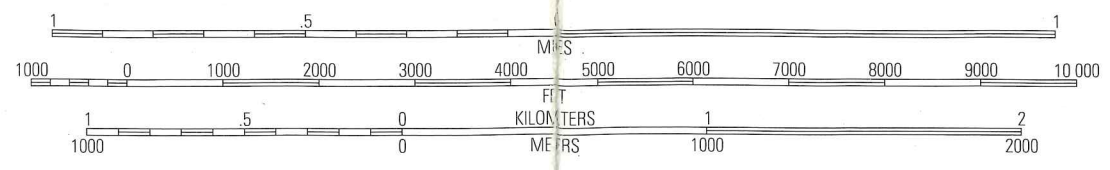
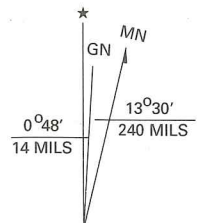
19

24



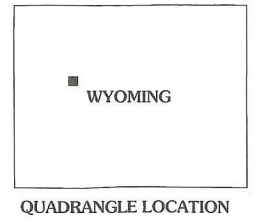
ST | 593 | 594 | 50' | 595 | 596 | 597 | 47' 30" | 598 | 599 | 99000 m E | INTERIOR GEOLOGICAL SURVEY, RESTON VIRGINIA-1997 | 230000 FEET (WEST CENTRAL) | 109° 45' | 43° 22' 30"

SCALE 1:24 000

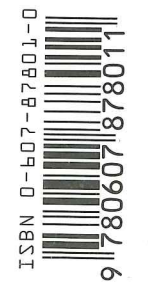


CONTOUR INTERVAL 40 FEET

NATIONAL GEODETIC VERTICAL DATUM OF 1929 TO CONVERT FEET TO METERS MULTIPLY BY 0.3048



Symbol	Description
	Interstate
	U. S.
	State
	County
	National Forest, suitable for passenger cars
	National Forest, suitable for 4 wheel drive
	National Forest, suitable for 4 wheel drive
	Primary highway
	Secondary highway
	Light-duty road
	Paved
	Gravel
	Dirt
	Composition unspecified
	Unimproved; 4 wheel drive
	Trail



service 1991.

Blue

UTM GRID AND 1994 MAGNETIC NORTH DECLINATION AT CENTER OF SHEET